

4

3

2

1

D

D

C

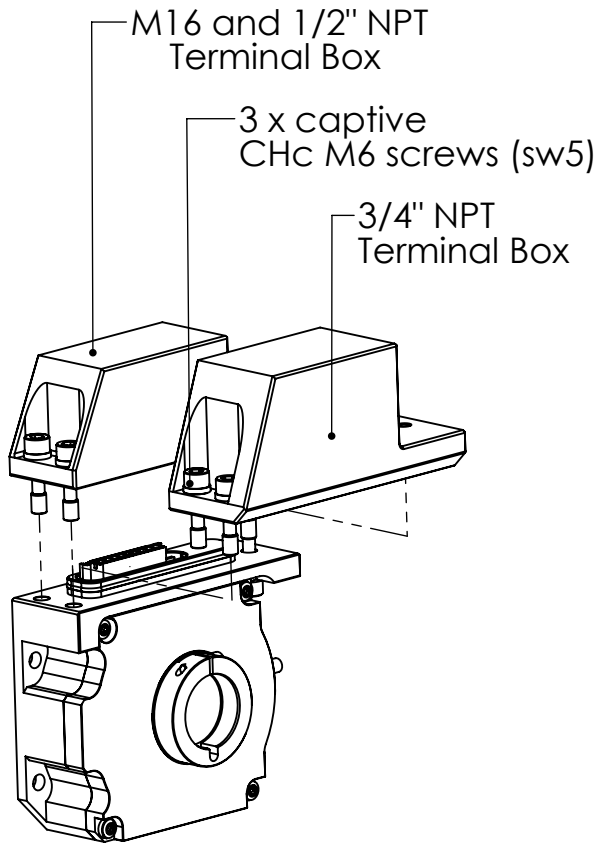
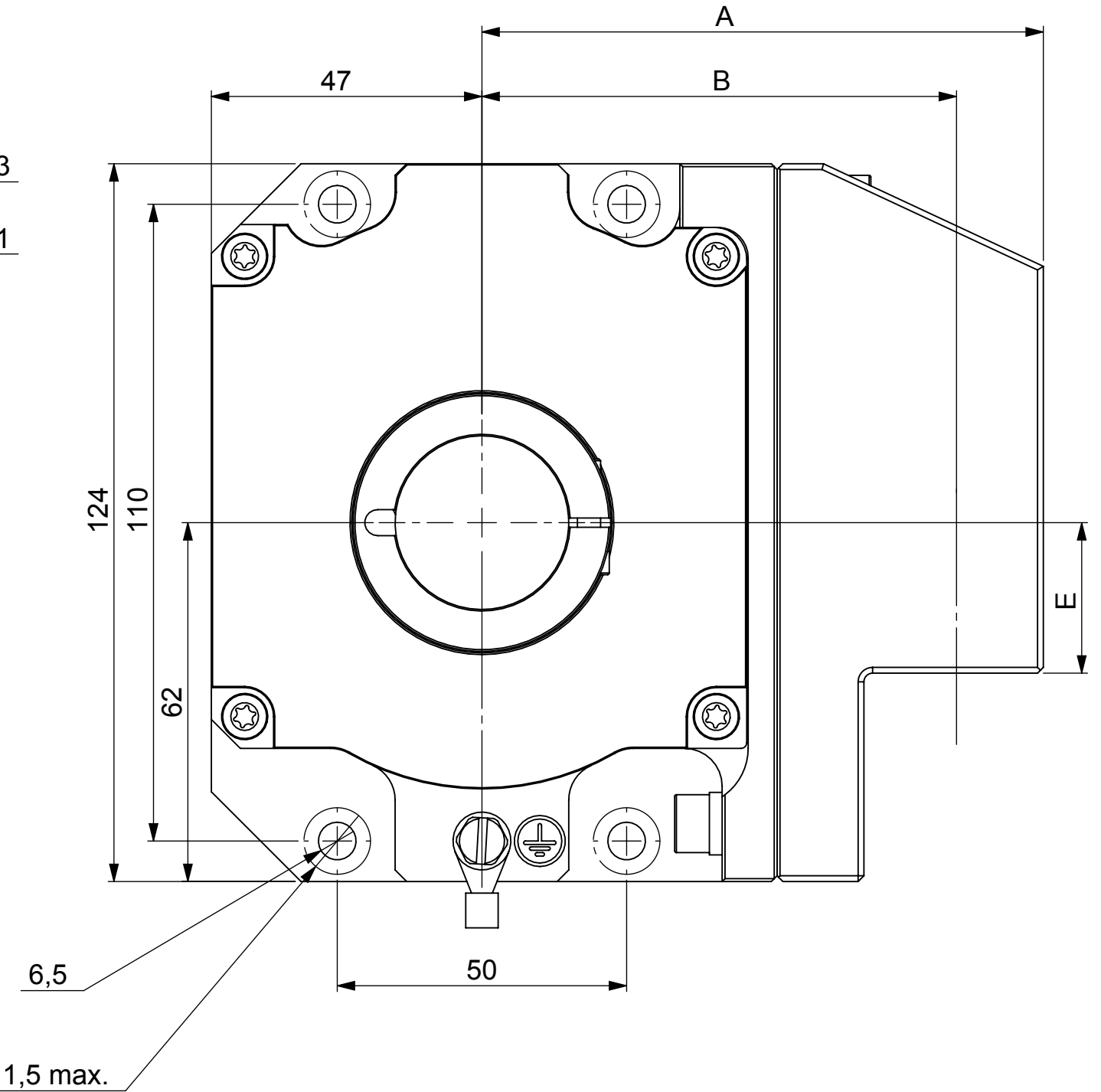
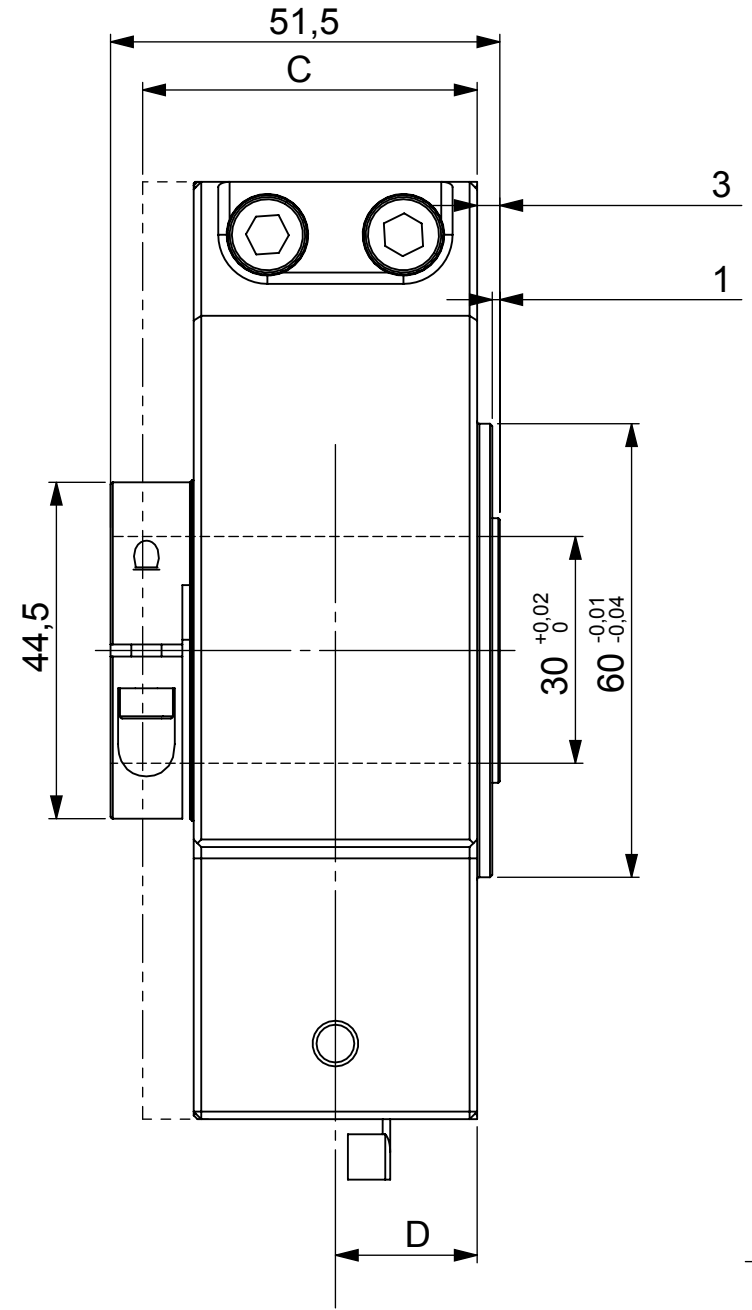
C

B

B

A

A



	M20-1/2" NPT Terminal Box		3/4" NPT Terminal Box	
	mm	inch	mm	inch
A	97	3.819	109	4.291
B	82	3.228	88,5	3.484
C	37,50	1.437	44	1.732
D	18.25	0.719	22.25	0.876
E	27	0.945	24	0.945
ØG (Cable gland)	31	1.220	42	1.653
Cable Ø	9 to 16	3/8 to 5/8	17 to 26	2/3 to 1

UNCONTROLLED COPY

FIRST ISSUE DATE : 13/06/2018  
 DRAWN : RHM  
 APPROVED : JHH  
 DATE : 05/03/2015

SENSATA TECHNOLOGIES PROPRIETARY AND CONFIDENTIAL. NEITHER THIS PRINT NOR THE INFORMATION CONTAINED HEREON IS TO BE USED AGAINST THE INTERESTS OF SENSATA TECHNOLOGIES OR AGAINST THE INTERESTS OF ANY OF ITS AFFILIATED COMPANIES OR WHOLLY OWNED SUBSIDIARIES.



BEI SENSORS SAS  
 Espace Européen de l'Entreprise  
 9, rue de Copenhague  
 BP 70044 - F 67013 STRASBOURG Cedex  
 Tel : +33 (0)3 88 20 81 40

ECN :  
 DATE :  
 Housing material : Aluminum  
 Flange material : Aluminum  
 Shaft material : AISI 303

UNLESS OTHERWISE SPECIFIED DIMENSIONS ARE IN MILLIMETERS [INCHES] AND ARE INTENDED AS NOMINAL. SEE PRODUCT SPECIFICATION FOR MORE DETAILS.

DO NOT SCALE DRAWING  
 EUROPEAN SYSTEM

TITLE HHUX Outline Drawing			
SIZE A3	DWG NO. M040	REV. A	
SCALE 1/1	SOLIDWORKS	SHEET 1 OF 1	

4

3

2

1

DEVICE:

PROJECT: