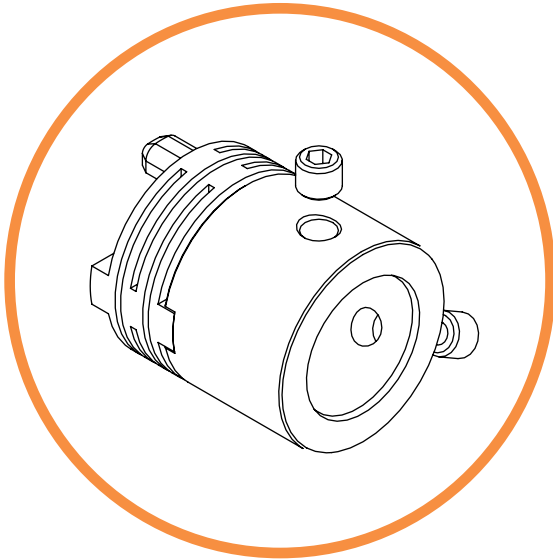


INTEGRATED COUPLING HUB/FLEX – FOR LP35 EXPLOSION PROOF

M9410/010-XXX

Introduction

This hub/flex assembly is part of the Integrated Coupling assembly used with the LP35 Explosion Proof Hollow-Shaft style encoder. This assembly is provided with the LP35 Explosion Proof encoders and it is specified within the model number as C14P, C20P, etc. When ordered separately as a spare or replacement part, use the part numbers below:



Part No.

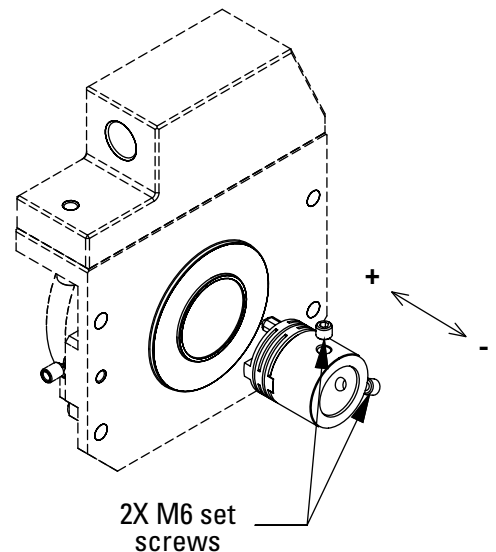
- M9410/010-10 = 10mm Bore
- M9410/010-12 = 12mm Bore
- M9410/010-14 = 14mm Bore
- M9410/010-20 = 20mm (max. mm) Bore
- M9410/010-E3 = $\frac{3}{8}$ in. Bore
- M9410/010-E4 = $\frac{1}{2}$ in. Bore
- M9410/010-E5 = $\frac{5}{8}$ in. Bore
- M9410/010-E6 = $\frac{3}{4}$ in. (max. inch) Bore

Features

- The integrated coupling allows for hard mounting of the encoder body to the motor frame or flange
- The integrated coupling provides both thermal and electrical isolation of the encoder from the shaft without increasing the overall thickness of the encoder
- The integrated coupling is available in several bore sizes to fit many shaft sizes

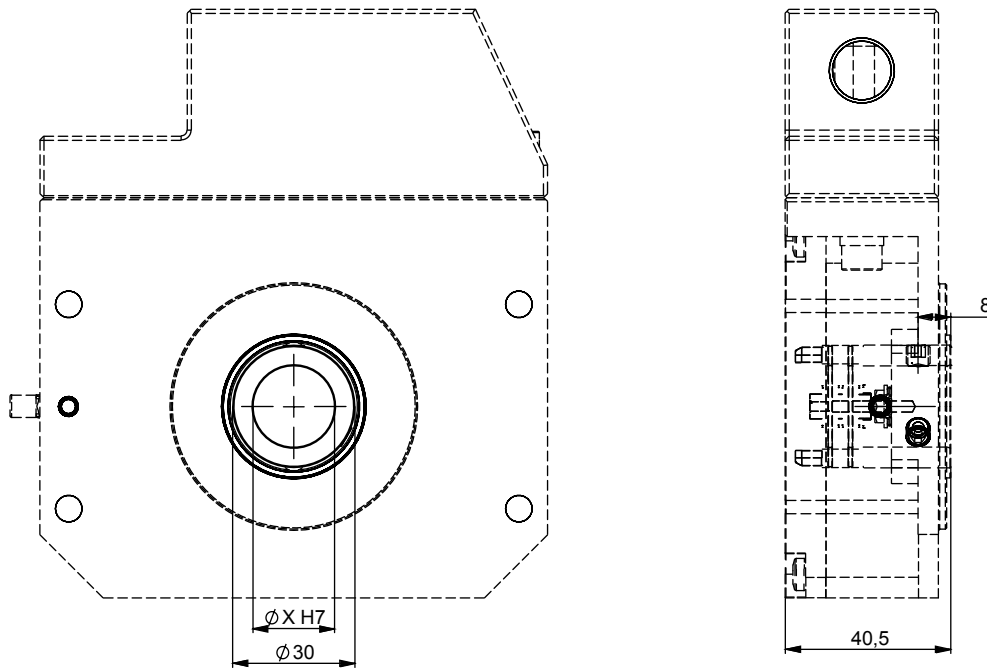
NOTE: Pay close attention to the misalignment specifications shown in the table, below

Shaft Diameter	Perpendicularity	Permissible Misalignment
$\varnothing < 0.7"$ (18mm)	$\pm 1^\circ$	$+1.0\text{mm}/-2.5\text{mm}$ ($+0.039\text{in}/-0.098\text{in}$) (+) is inward and (-) is outward)
0.787" ($\varnothing 20\text{mm}$)	$\pm 0.25^\circ$	





DIMENSIONS



NOTE

Reference the online user's manual for details of installing and aligning the Integrated Coupling.

Sensata Technologies, Inc. ("Sensata") data sheets are solely intended to assist designers ("Buyers") who are developing systems that incorporate Sensata products (also referred to herein as "components"). Buyer understands and agrees that Buyer remains responsible for using its independent analysis, evaluation and judgment in designing Buyer's systems and products. Sensata data sheets have been created using standard laboratory conditions and engineering practices. Sensata has not conducted any testing other than that specifically described in the published documentation for a particular data sheet. Sensata may make corrections, enhancements, improvements and other changes to its data sheets or components without notice.

Buyers are authorized to use Sensata data sheets with the Sensata component(s) identified in each particular data sheet. HOWEVER, NO OTHER LICENSE, EXPRESS OR IMPLIED, BY ESTOPPEL OR OTHERWISE TO ANY OTHER SENSATA INTELLECTUAL PROPERTY RIGHT, AND NO LICENSE TO ANY THIRD PARTY TECHNOLOGY OR INTELLECTUAL PROPERTY RIGHT, IS GRANTED HEREIN. SENSATA DATA SHEETS ARE PROVIDED "AS IS". SENSATA MAKES NO WARRANTIES OR REPRESENTATIONS WITH REGARD TO THE DATA SHEETS OR USE OF THE DATA SHEETS, EXPRESS, IMPLIED OR STATUTORY, INCLUDING ACCURACY OR COMPLETENESS. SENSATA DISCLAIMS ANY WARRANTY OF TITLE AND ANY IMPLIED WARRANTIES OF MERCHANTABILITY, FITNESS FOR A PARTICULAR PURPOSE, QUIET ENJOYMENT, QUIET POSSESSION, AND NON-INFRINGEMENT OF ANY THIRD PARTY INTELLECTUAL PROPERTY RIGHTS WITH REGARD TO SENSATA DATA SHEETS OR USE THEREOF.

All products are sold subject to Sensata's terms and conditions of sale supplied at www.sensata.com SENSATA ASSUMES NO LIABILITY FOR APPLICATIONS ASSISTANCE OR THE DESIGN OF BUYERS' PRODUCTS. BUYER ACKNOWLEDGES AND AGREES THAT IT IS SOLELY RESPONSIBLE FOR COMPLIANCE WITH ALL LEGAL, REGULATORY AND SAFETY-RELATED REQUIREMENTS CONCERNING ITS PRODUCTS, AND ANY USE OF SENSATA COMPONENTS IN ITS APPLICATIONS, NOTWITHSTANDING ANY APPLICATIONS-RELATED INFORMATION OR SUPPORT THAT MAY BE PROVIDED BY SENSATA.

Mailing Address: Sensata Technologies, Inc., 529 Pleasant Street, Attleboro, MA 02703, USA.

CONTACT US

Americas

+1 (800) 350 2727 – Option 1
sales.beisensors@sensata.com
Europe, Middle East & Africa
+33 (3) 88 20 8080
position-info.eu@sensata.com

Asia Pacific

sales.isasia@list.sensata.com
China +86 (21) 2306 1500
Japan +81 (45) 277 7117
Korea +82 (31) 601 2004
India +91 (80) 67920890
Rest of Asia +886 (2) 27602006
ext 2808