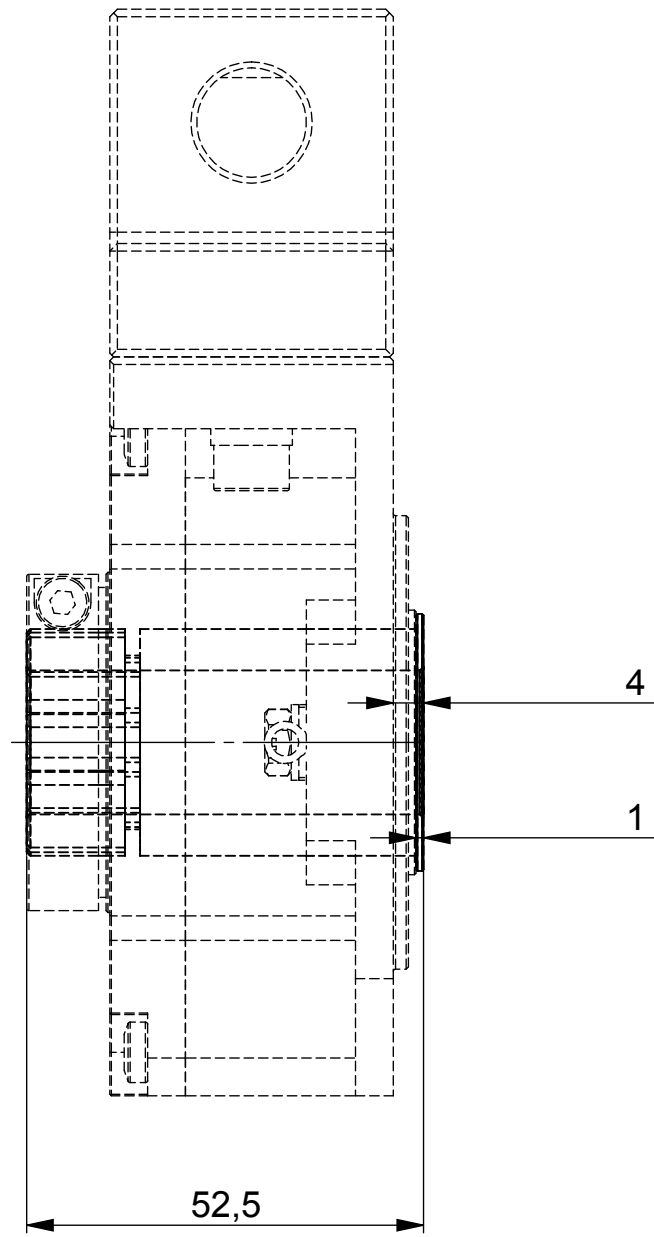
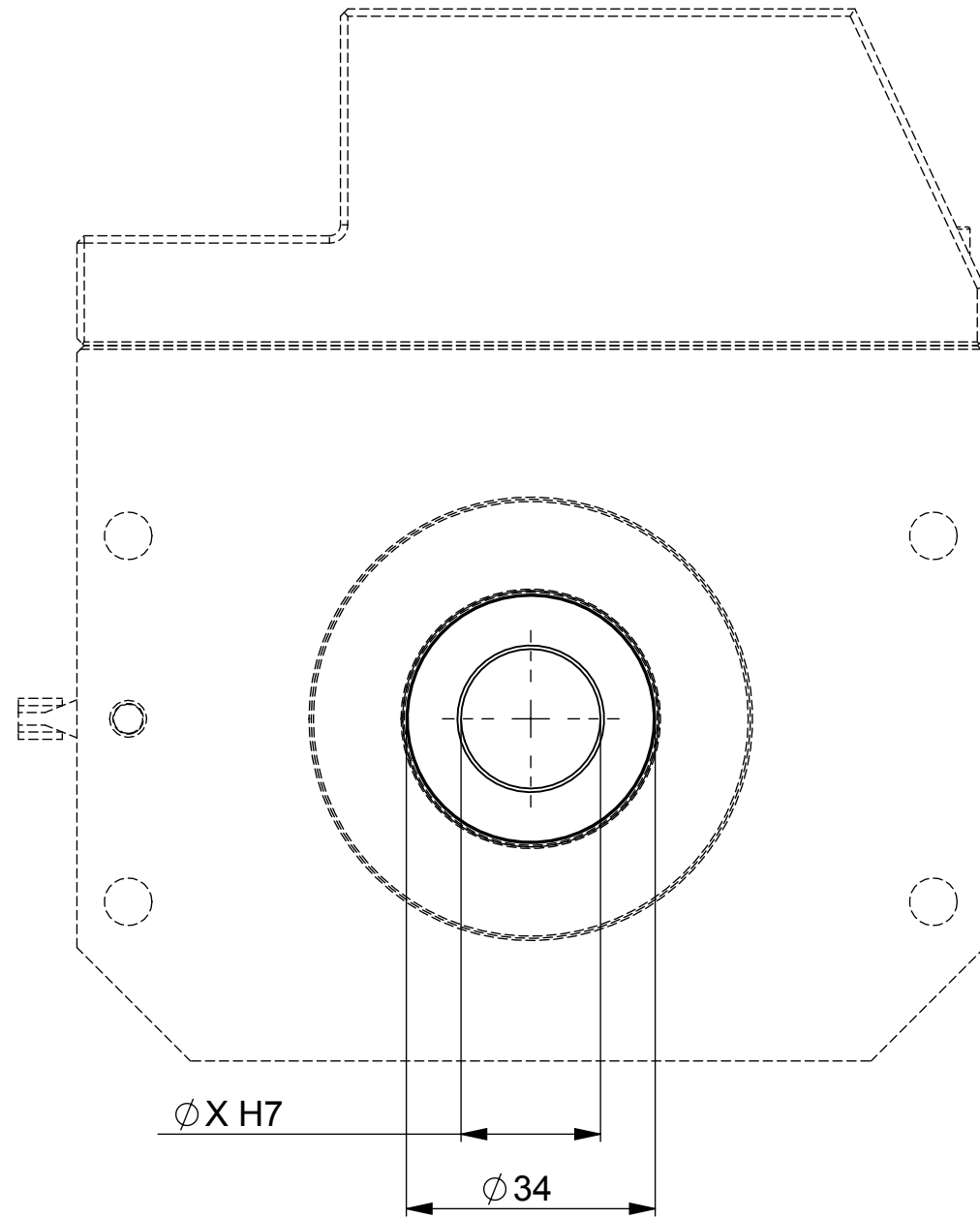


4

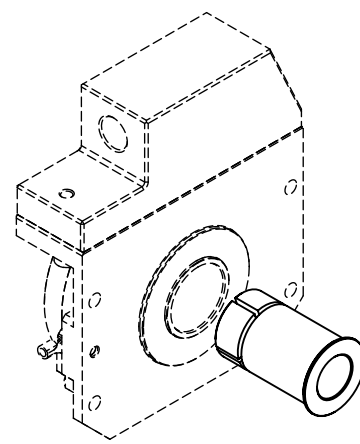
3


2

1



Ordering reference: **9418/EE6** for X=19.05mm
9418/E20 for X=20mm
9418/EE8 for X=25.4mm



UNCONTROLLED COPY		 BEI SENSORS SAS Espace Européen de l'Entreprise 9, rue de Copenhague BP 70044 - F 67013 STRASBOURG Cedex Tel : +33 (0)3 88 20 81 40	
FIRST ISSUE DATE : 14/05/2018 DRAWN : RHM APPROVED : JHH DATE : 14/05/2018	SENSATA TECHNOLOGIES PROPRIETARY AND CONFIDENTIAL. NEITHER THIS PRINT NOR THE INFORMATION CONTAINED HEREON IS TO BE USED AGAINST THE INTERESTS OF SENSATA TECHNOLOGIES OR AGAINST THE INTERESTS OF ANY OF ITS AFFILIATED COMPANIES OR WHOLLY OWNED SUBSIDIARIES.	TITLE HHUX Reduction sleeve	
ECN : DATE :	UNLESS OTHERWISE SPECIFIED DIMENSIONS ARE IN MILLIMETERS (INCHES) AND ARE INTENDED AS NOMINAL. SEE PRODUCT SPECIFICATION FOR MORE DETAILS.	SIZE A3	DWG NO. M029
Housing material : Flange material : Shaft material : Peek	DO NOT SCALE DRAWING	EUROPEAN SYSTEM	REV. A
SCALE 1/1		SOLIDWORKS	SHEET 1 OF 1

4

3

2

1

DEVICE:

PROJECT: