

4

3

2

1

D

D

C

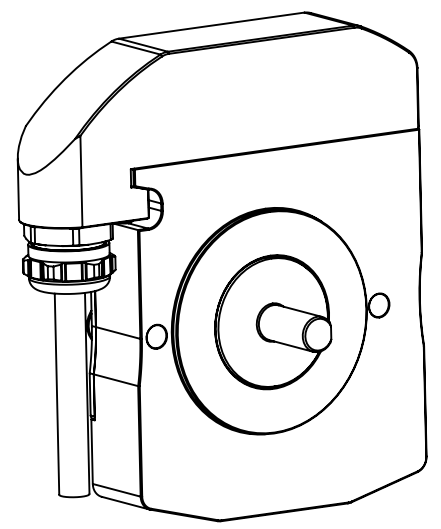
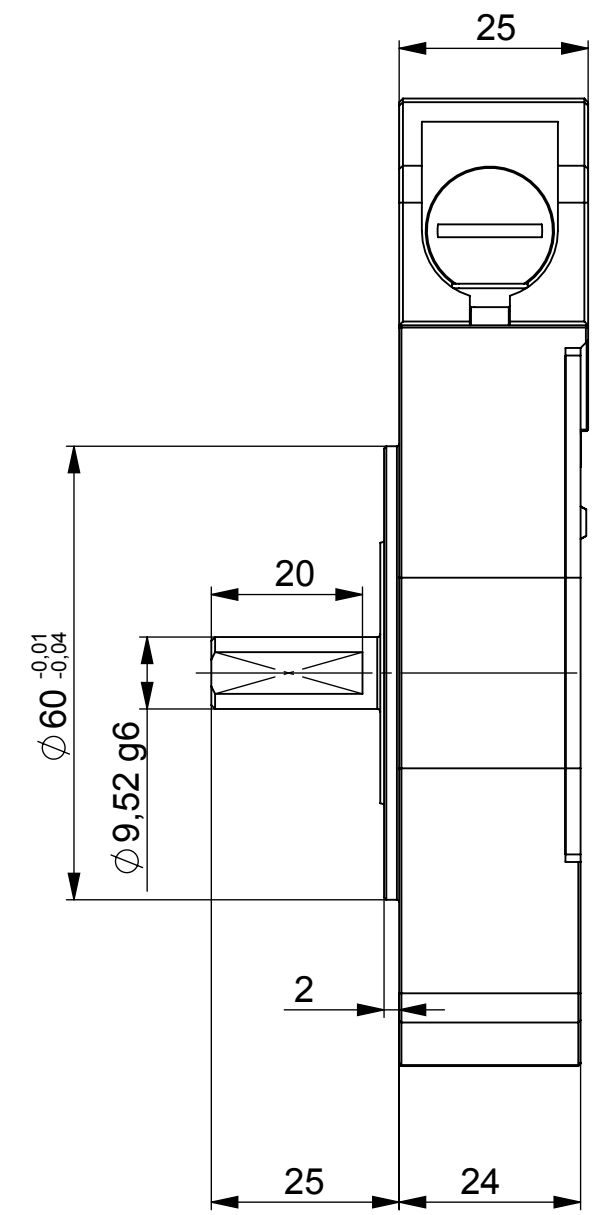
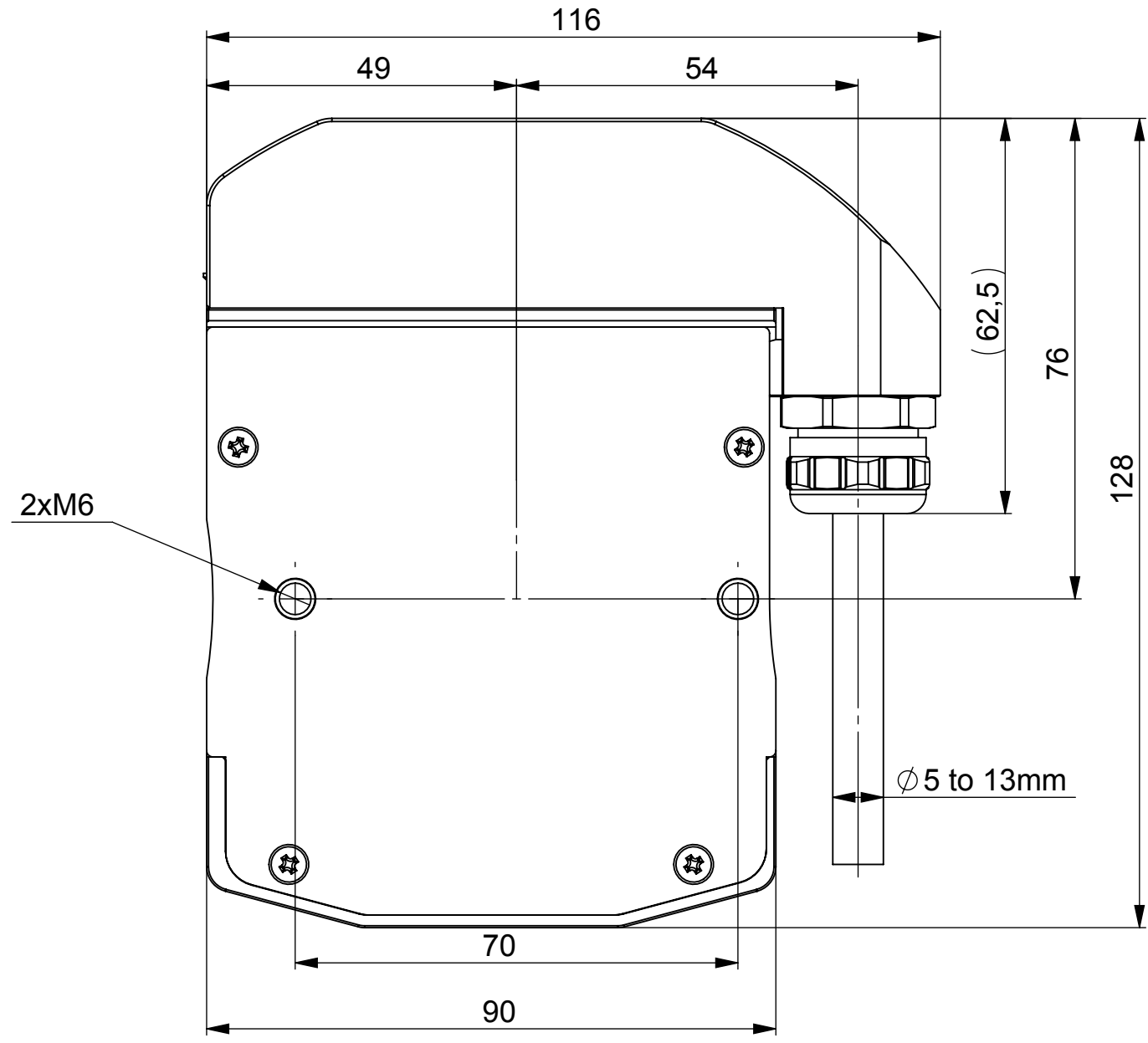
C


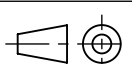
B

B

A

A



UNCONTROLLED COPY			
FIRST ISSUE DATE : 11/07/2018 DRAWN : RHM APPROVED : JHH DATE : 11/07/2018	SENSATA TECHNOLOGIES PROPRIETARY AND CONFIDENTIAL. NEITHER THIS PRINT NOR THE INFORMATION CONTAINED HEREON IS TO BE USED AGAINST THE INTERESTS OF SENSATA TECHNOLOGIES OR AGAINST THE INTERESTS OF ANY OF ITS AFFILIATED COMPANIES OR WHOLLY OWNED SUBSIDIARIES.		 BEI SENSORS SAS Espace Européen de l'Entreprise 9, rue de Copenhague BP 70044 - F 67013 STRASBOURG Cedex Tel : +33 (0)3 88 20 81 40
ECN :	UNLESS OTHERWISE SPECIFIED DIMENSIONS ARE IN MILLIMETERS (INCHES) AND ARE INTENDED AS NOMINAL. SEE PRODUCT SPECIFICATION FOR MORE DETAILS.		TITLE
DATE :	DO NOT SCALE DRAWING		LP35-S-P-XP-S3E-28V-T-T0
Housing material : Aluminum Flange material : Aluminum Shaft material : Stainless Steel	EUROPEAN SYSTEM		SIZE A3 DWG NO. M052 REV. A
SCALE 1/1		SOLIDWORKS	SHEET 1 OF 1

4

3

2

1

DEVICE:

PROJECT: