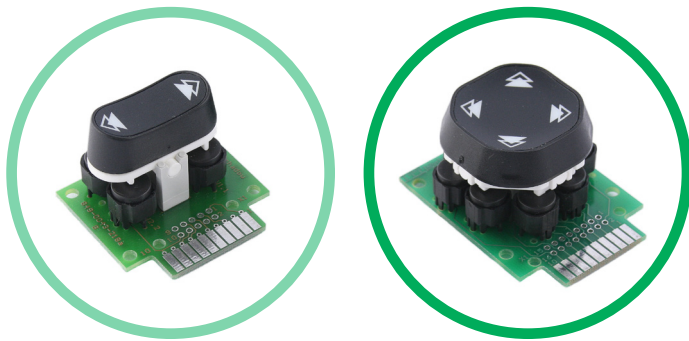


RS & QS

Switch Modules

Introduction

The Rocker Switch modules RS1 and RS2 are designed to be installed into front panels, multifunction grips or other switching units. The Quadrant Switch modules QS1 and QS2 are designed to be installed into front panels, multifunction grips or other switching units.



Main Features

RS1

- This module is standard rocker switch with a single switch function in both directions.

RS2

- With the RS2 a double switch function is available in both directions.

QS1

- This module is a quad switch similar to a "mirror switch" made of four K12 switches, designed for 4 switching functions (e.g. for movements in four directions: up, down, left and right).

QS2

- This module is similar to the QS1 but has a double switch function and is made up with eight K12 switches allowing additional functions in each direction.

SPECIFICATIONS

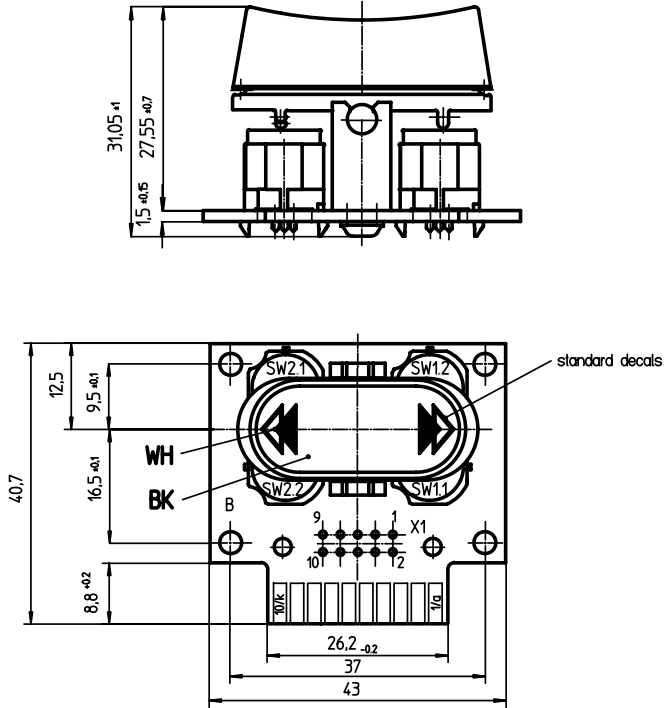
Technical

Variant

| Technical | Variant | |
|--------------------------------------------------------|--------------------------|--------------------------------------------------------------------------------------------------------------------------------------------------------------------------------------------------------------------------------------------|
| Types | RS1 RS2 QS1 QS2 | two K12 switches, one switching function per direction four K12 switches, two switching functions per direction four K12 switches, one switching function per direction eight K12 switches, two switching functions per direction |
| Dimensions (length, width, height) | RS QS | 43 x 40.7 x 27.55 mm 58.9 x 43 x 27.5 mm |
| Operating Life | | > 1 million cycles |
| Operating temperature - Storage - Working | | - 40°C to 85°C - 25°C to 85°C |
| Protection Level | | IP65 (from above when mounted with extra sealing) |
| Main features of K12 | | Tactile feedback, positive snap-point (more technical details see datasheet for K12 switches) |

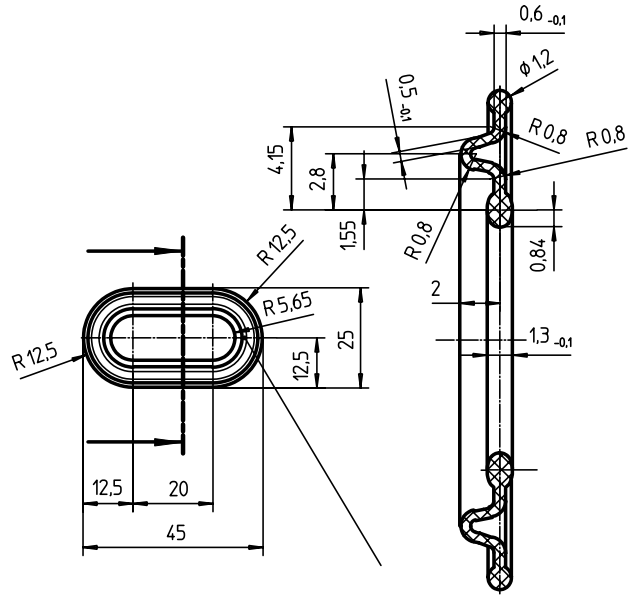
Rocker Switch

Install dimensions



Rocker Switch

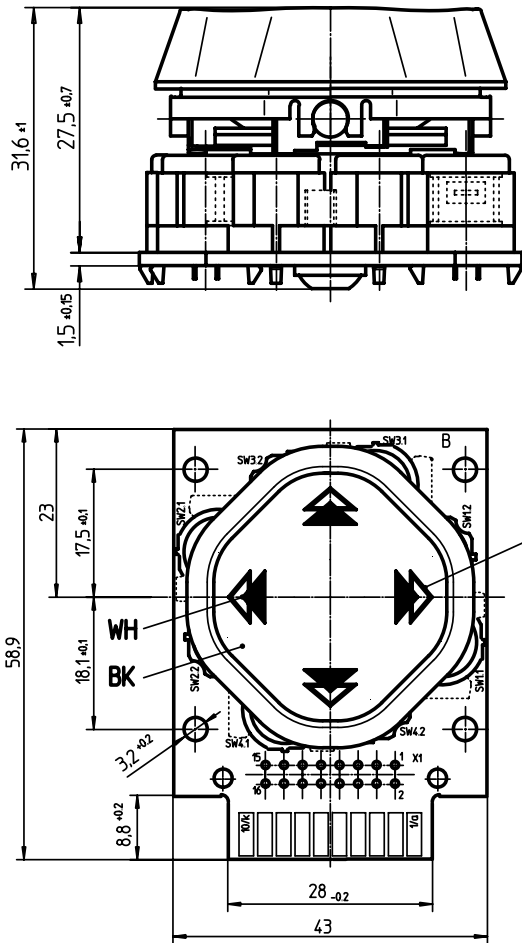
Sealing



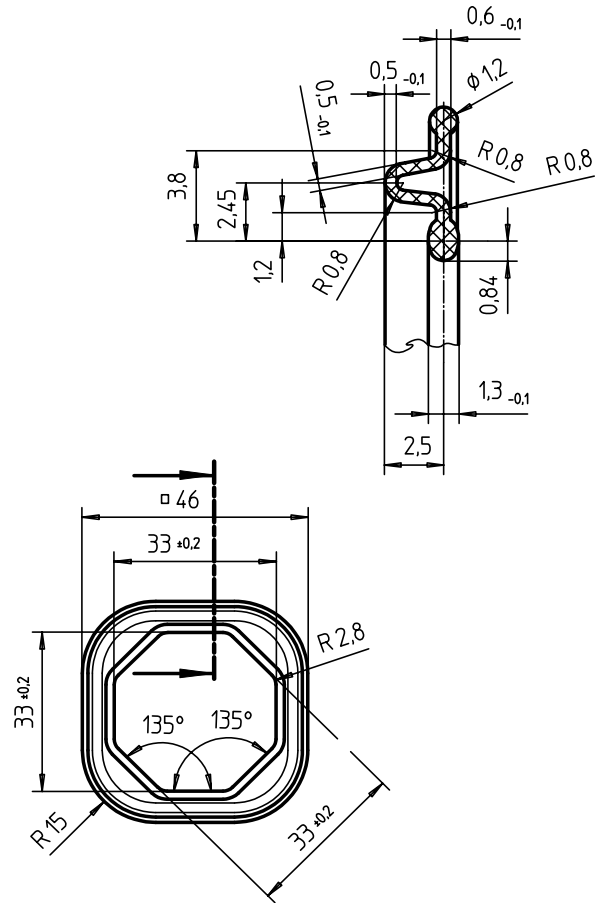
Pin Assigment

| Switch No. | Conector-No.X1 | | Pad-Bar | |
|------------|----------------|--------|---------|--------|
| | Input | Output | Input | Output |
| SW1.1 | 1 | 2 | 1 | b |
| SW1.2 | 3 | 4 | 3 | d |
| SW2.1 | 7 | 8 | 7 | 8 |
| SW2.2 | 9 | 10 | h | 10 |

Quadrant Switch Install dimensions



Quadrant Switch Sealing

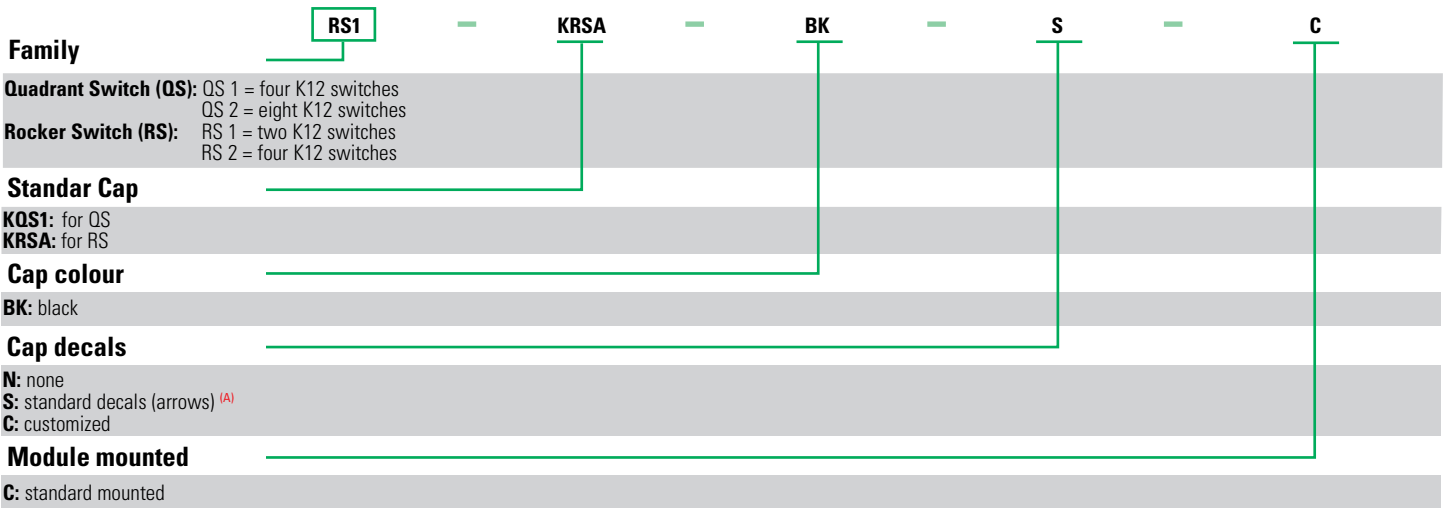


| Pin Assignment | | | | |
|----------------|----------------|--------|---------|--------|
| Switch No. | Conector-No.X1 | | Pad-Bar | |
| | Input | Output | Input | Output |
| SW1.1 | 2 | 4 | 2 | 3 |
| SW1.2 | 1 | 3 | b | c |
| SW2.1 | 14 | 16 | 8 | 9 |
| SW2.2 | 13 | 15 | h | i |
| SW3.1 | 6 | 8 | 4 | 5 |
| SW3.2 | 9 | 11 | f | g |
| SW4.1 | 10 | 12 | 6 | 7 |
| SW4.2 | 5 | 7 | d | e |



ORDERING OPTIONS

Example : RS1 KRSA BK S C



GENERAL NOTES

^(A) see drawing overleaf

Sensata Technologies, Inc. ("Sensata") data sheets are solely intended to assist designers ("Buyers") who are developing systems that incorporate Sensata products (also referred to herein as "components"). Buyer understands and agrees that Buyer remains responsible for using its independent analysis, evaluation and judgment in designing Buyer's systems and products. Sensata data sheets have been created using standard laboratory conditions and engineering practices. Sensata has not conducted any testing other than that specifically described in the published documentation for a particular data sheet. Sensata may make corrections, enhancements, improvements and other changes to its data sheets or components without notice.

Buyers are authorized to use Sensata data sheets with the Sensata component(s) identified in each particular data sheet. HOWEVER, NO OTHER LICENSE, EXPRESS OR IMPLIED, BY ESTOPPEL OR OTHERWISE TO ANY OTHER SENSATA INTELLECTUAL PROPERTY RIGHT, AND NO LICENSE TO ANY THIRD PARTY TECHNOLOGY OR INTELLECTUAL PROPERTY RIGHT, IS GRANTED HEREIN. SENSATA DATA SHEETS ARE PROVIDED "AS IS". SENSATA MAKES NO WARRANTIES OR REPRESENTATIONS WITH REGARD TO THE DATA SHEETS OR USE OF THE DATA SHEETS, EXPRESS, IMPLIED OR STATUTORY, INCLUDING ACCURACY OR COMPLETENESS. SENSATA DISCLAIMS ANY WARRANTY OF TITLE AND ANY IMPLIED WARRANTIES OF MERCHANTABILITY, FITNESS FOR A PARTICULAR PURPOSE, QUIET ENJOYMENT, QUIET POSSESSION, AND NON-INFRINGEMENT OF ANY THIRD PARTY INTELLECTUAL PROPERTY RIGHTS WITH REGARD TO SENSATA DATA SHEETS OR USE THEREOF.

All products are sold subject to Sensata's terms and conditions of sale supplied at www.sensata.com SENSATA ASSUMES NO LIABILITY FOR APPLICATIONS ASSISTANCE OR THE DESIGN OF BUYERS' PRODUCTS. BUYER ACKNOWLEDGES AND AGREES THAT IT IS SOLELY RESPONSIBLE FOR COMPLIANCE WITH ALL LEGAL, REGULATORY AND SAFETY-RELATED REQUIREMENTS CONCERNING ITS PRODUCTS, AND ANY USE OF SENSATA COMPONENTS IN ITS APPLICATIONS, NOTWITHSTANDING ANY APPLICATIONS-RELATED INFORMATION OR SUPPORT THAT MAY BE PROVIDED BY SENSATA.

Mailing Address: Sensata Technologies, Inc., 529 Pleasant Street, Attleboro, MA 02703, USA.

CONTACT US

INDUSTRIAL SOLUTIONS DIVISION

Americas
+1 (800) 350 2727
sensors.deltatech@sensata.com

Europe, Middle East & Africa
+359 (2) 809 1826
ost-info.eu@sensata.com

Asia Pacific
sales.isasia@list.sensata.com
China +86 (21) 2306 1500
Japan +81 (45) 277 7117
Korea +82 (31) 601 2004
India +91 (80) 67920890
Rest of Asia +886 (2) 27602006 ext 2808

HEAVY VEHICLE & OFF-ROAD DIVISION

Americas
+1 508 236 2196
products@sensata.com

Europe, Middle East & Africa
+49 30 43 999 0
products@sensata.com

Asia Pacific
products@sensata.com
China +86 (21) 2306 1500
Japan +81 (45) 277 7001
Korea +82 (31) 601 2004